

CASE STUDY

THE BROADCASTING HEADQUARTERS

APPLICATION

Internal Façade

ARCHITECT

Valentiny (Liège - BE)

PRODUCT

TESS™440

LOCATION

Liège, Belgium

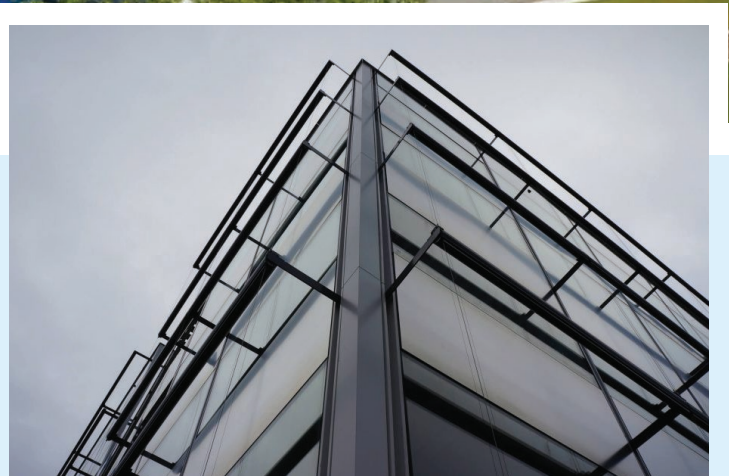
BUILDING TYPE

Commercial Office



External shading that disappears when not required.

Guthrie Douglas' TESS™440 was installed in this global Headquarters in Liège, Belgium. Designed by Valentiny architects and built by AM Galère-Moury, incorporating 23,000m² of office and production space. Sustainability, user comfort and light control were central to the design criteria for the building, and automated exterior fabric shading was integrated into the façade design at an early stage.



Visit us: www.guthriedouglas.com

Talk to us: +44(0)1926 310 850

Email us: projects@guthriedouglas.com

Guthrie Douglas

CASE STUDY

THE BROADCASTING HEADQUARTERS



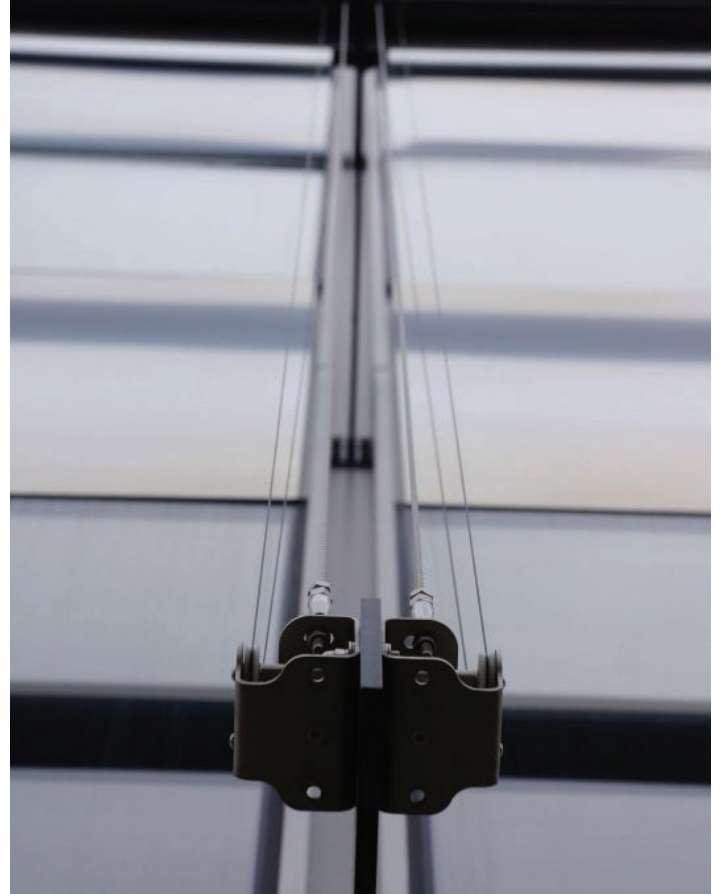
BIPP-BIPP SA worked with Groven +, the façade manufacturer and architect Valentiny to investigate the feasibility of a fabric tensioned screen being deployed 75cm away from the façade exterior of the building.

Bipp-Bipp SA chose Guthrie Douglas' TESS™ 440 for its discrete stainless steel cable guides, which blend in with the glass and brushed metallic finish of the façade, to allow a clean aesthetic when the blinds are retracted. When the blinds are deployed, the illusion is created of a floating fabric façade.

Following rigorous fabric testing, a polyester core fabric was selected, with a double holding seam manufactured in Italy, by DALEX. This fabric performed perfectly at the required wind speed of 80km/h.

The retractable fabric mesh allows users to enjoy natural light and views, whilst providing protection from heat and glare and precise control of light levels. The sustainability credentials of this design methodology were recognised with a 'Very Good' BREEAM rating.

The project team installed over 280 TESS™ systems in phases over three months in line with the construction programme. Guthrie Douglas were engaged by BIPP-BIPP SA to collaborate on design concept development, the feasibility study including wind resistance testing, system manufacture, on-site installation training and post-completion support.



Visit us: www.guthriedouglas.com

Talk to us: +44(0)1926 310 850

Email us: projects@guthriedouglas.com

Guthrie Douglas