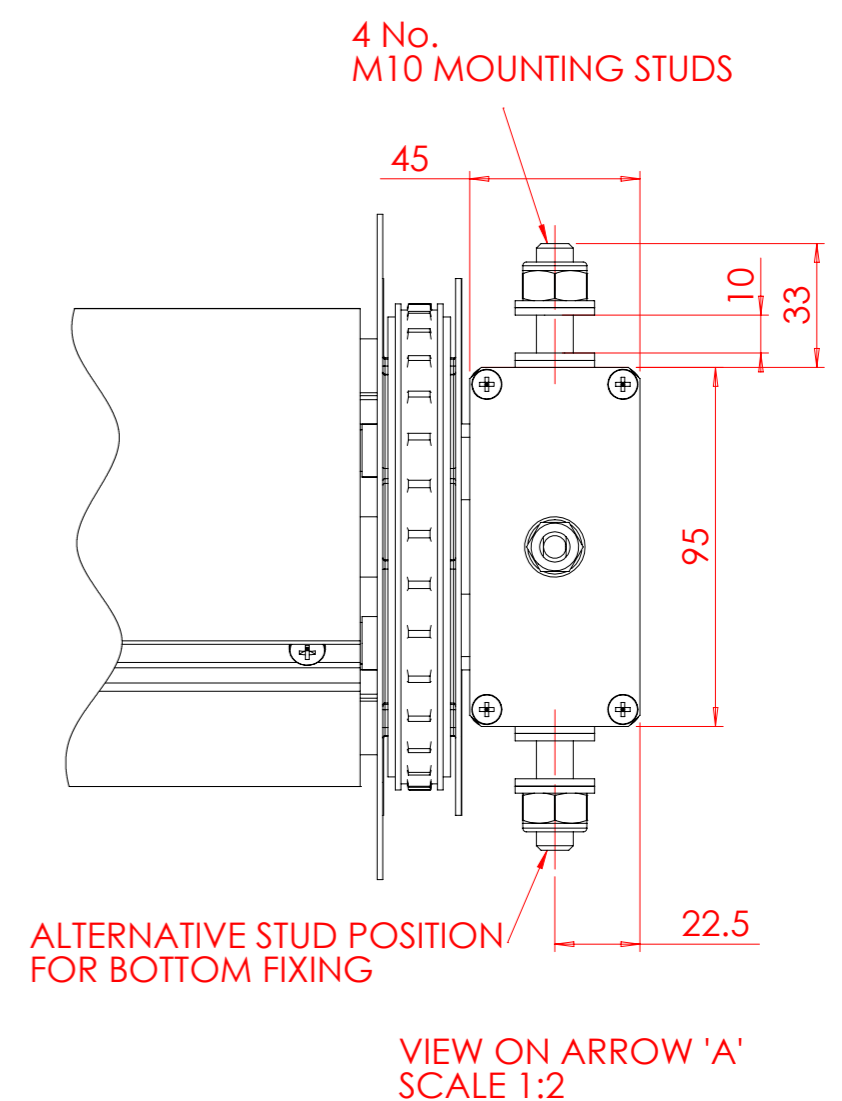
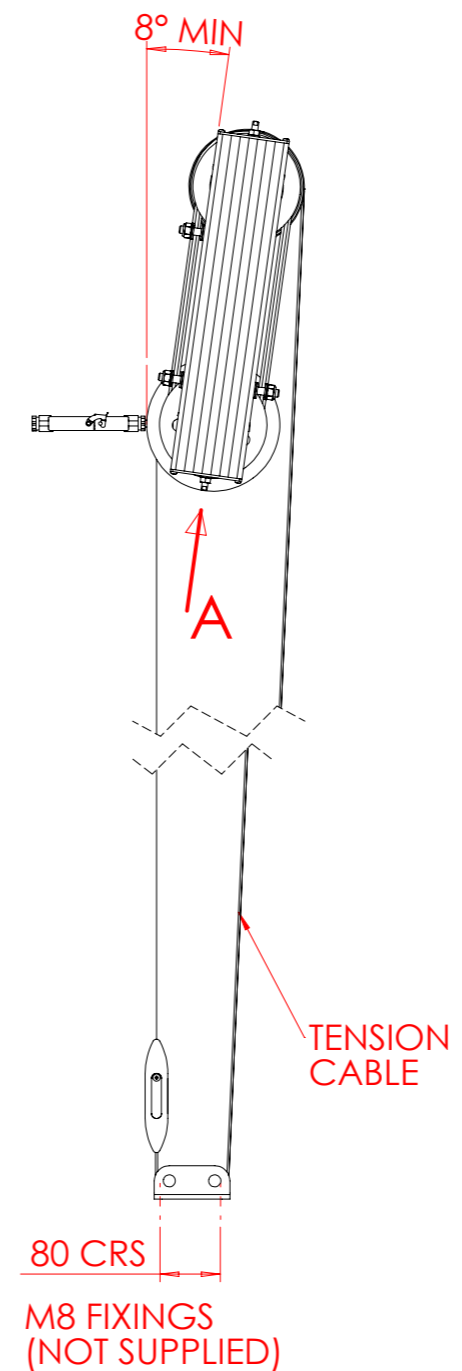
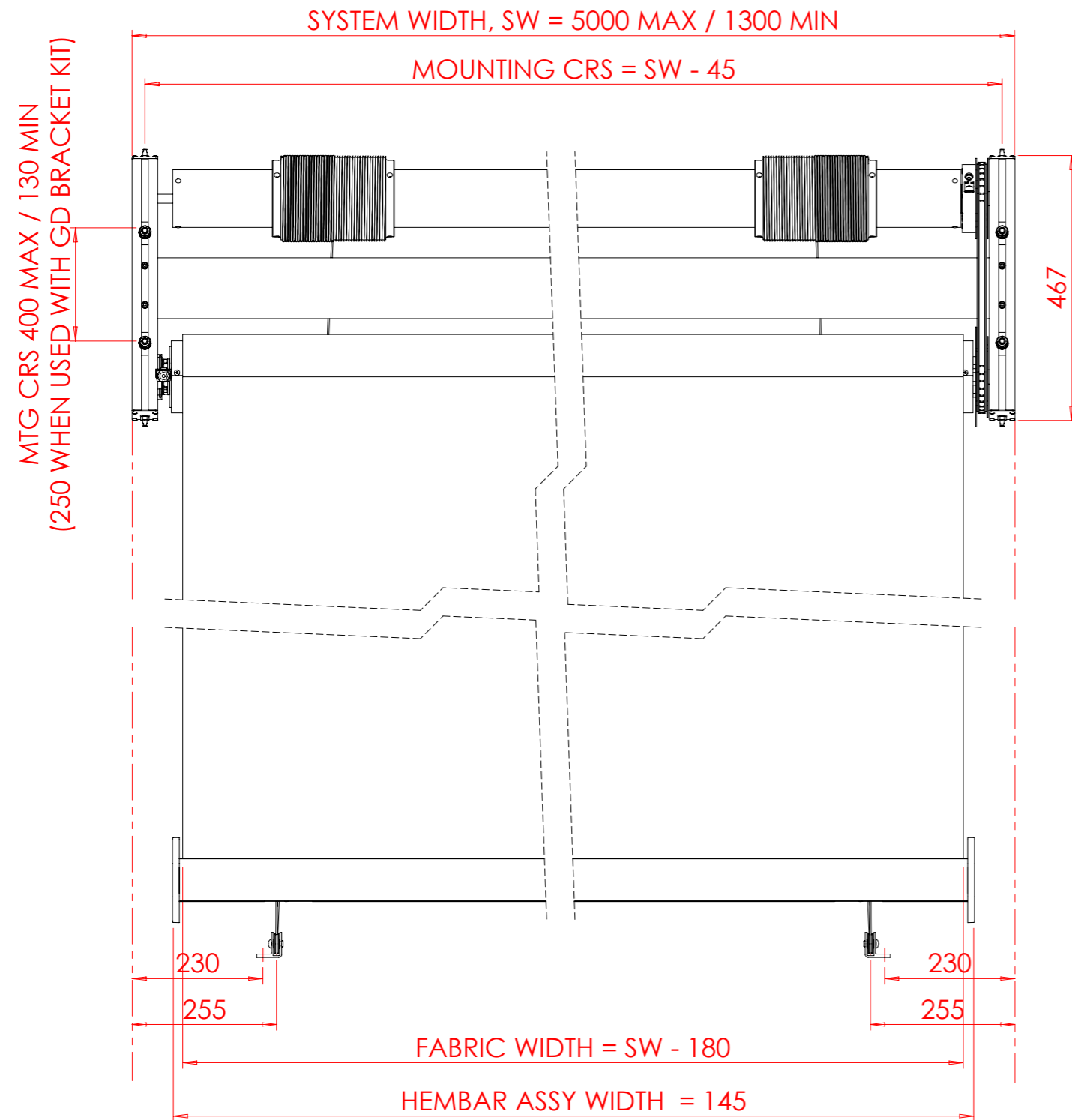


PRODUCTION	APPROVED FOR PRODUCTION
PURCHASING	APPROVED FOR PURCHASING
SALES	FOR INFORMATION ONLY
MARKETING	FOR INFORMATION ONLY



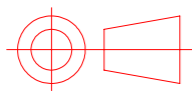
FOR FURTHER INFORMATION SEE :

GDP23999 - TYPICAL MOUNTING ARRANGMENTS    GDP11216 -  $\phi$  70 RELIEVING ROLLER (MAX WIDTH 5000)

GDP21052 - ALTERNATIVE CABLE DRUM POSITIONS    GDP11237 -  $\phi$  50 RELIEVING ROLLER (MAX WIDTH 3000)

GDP23991 - MOUNTING BRACKET KIT 'A'

GDP24001 - MOUNTING BRACKET KIT 'B'

THIRD ANGLE PROJECTION 	This drawing is copyright and the exclusive property of GUTHRIE DOUGLAS GROUP LTD., and must not be copied, used or exhibited without prior written consent.			Customer <b>STANDARD</b>		<b>TESS 200</b>		Product Group <b>SOLAR</b>		Item No. <b>N/A</b>
	<b>Guthrie Douglas</b> 12 Heathcote Way, Heathcote Industrial Estate, Warwick CV34 6TE, UK Tel : (01926) 310850 Fax : (01926) 832914			Material	Scale <b>1:10</b>			Size <b>A3</b>	Drawn Geoff.Smith	Date 09-07-2012
REMOVE ALL SHARP EDGES				Surface Finish Special		<b>INSTALLATION DATA</b>		DRG.NO: <b>GDP10162 / 14</b>		
IF IN DOUBT ASK	DO NOT SCALE							SHEET <b>1</b> OF <b>1</b> SHEETS		
GENERAL TOLERANCES TO ISO2768-m										
ALL DIMNS.IN mm    DRAWN TO BS308										