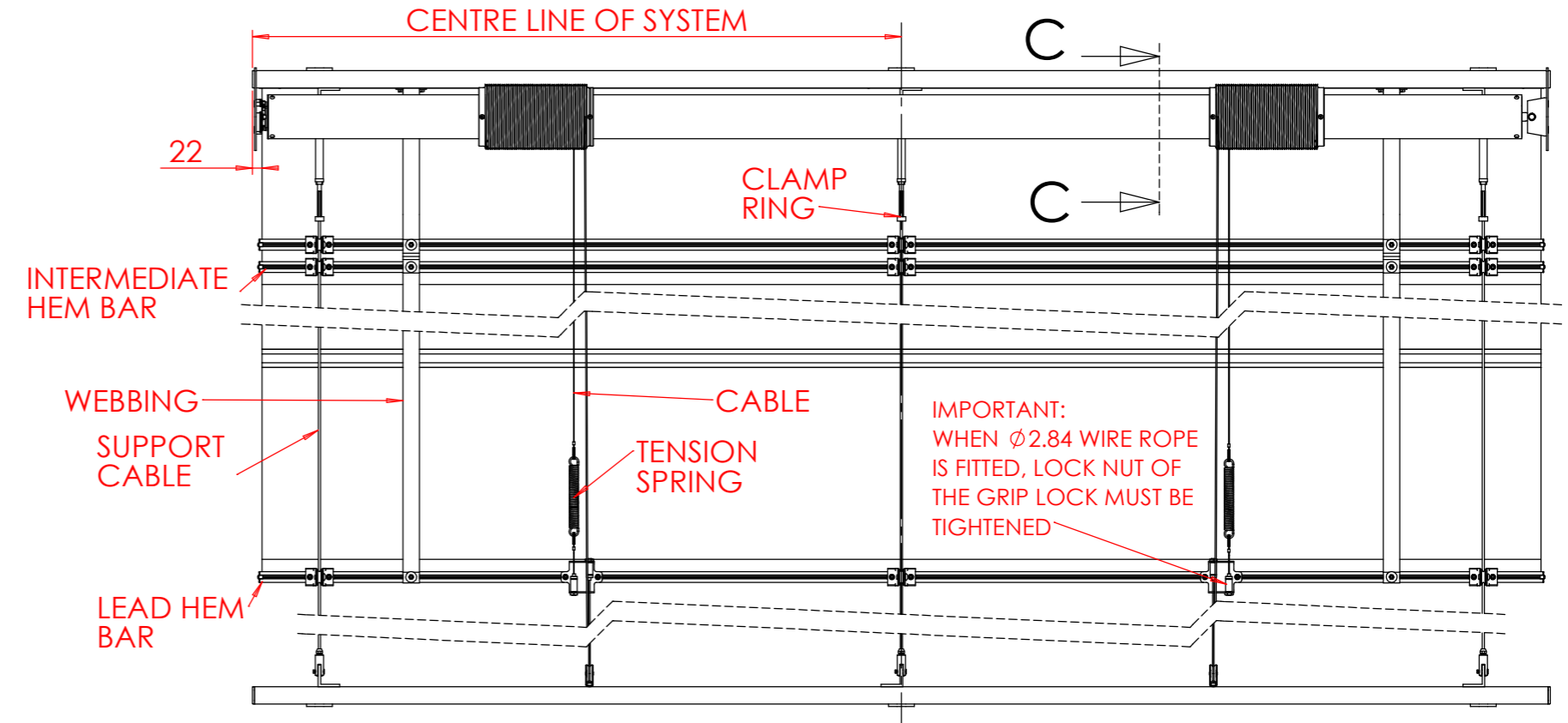
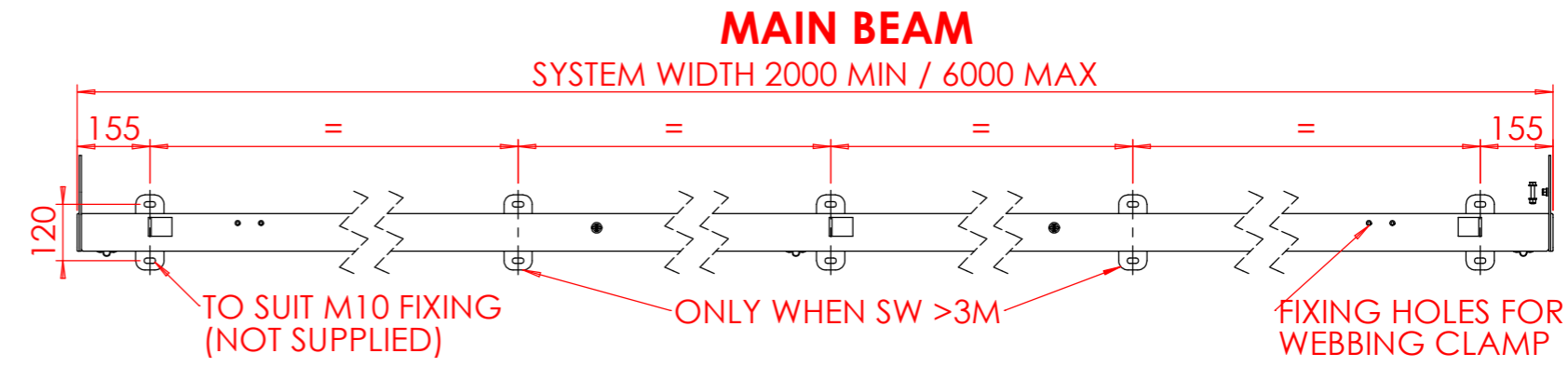
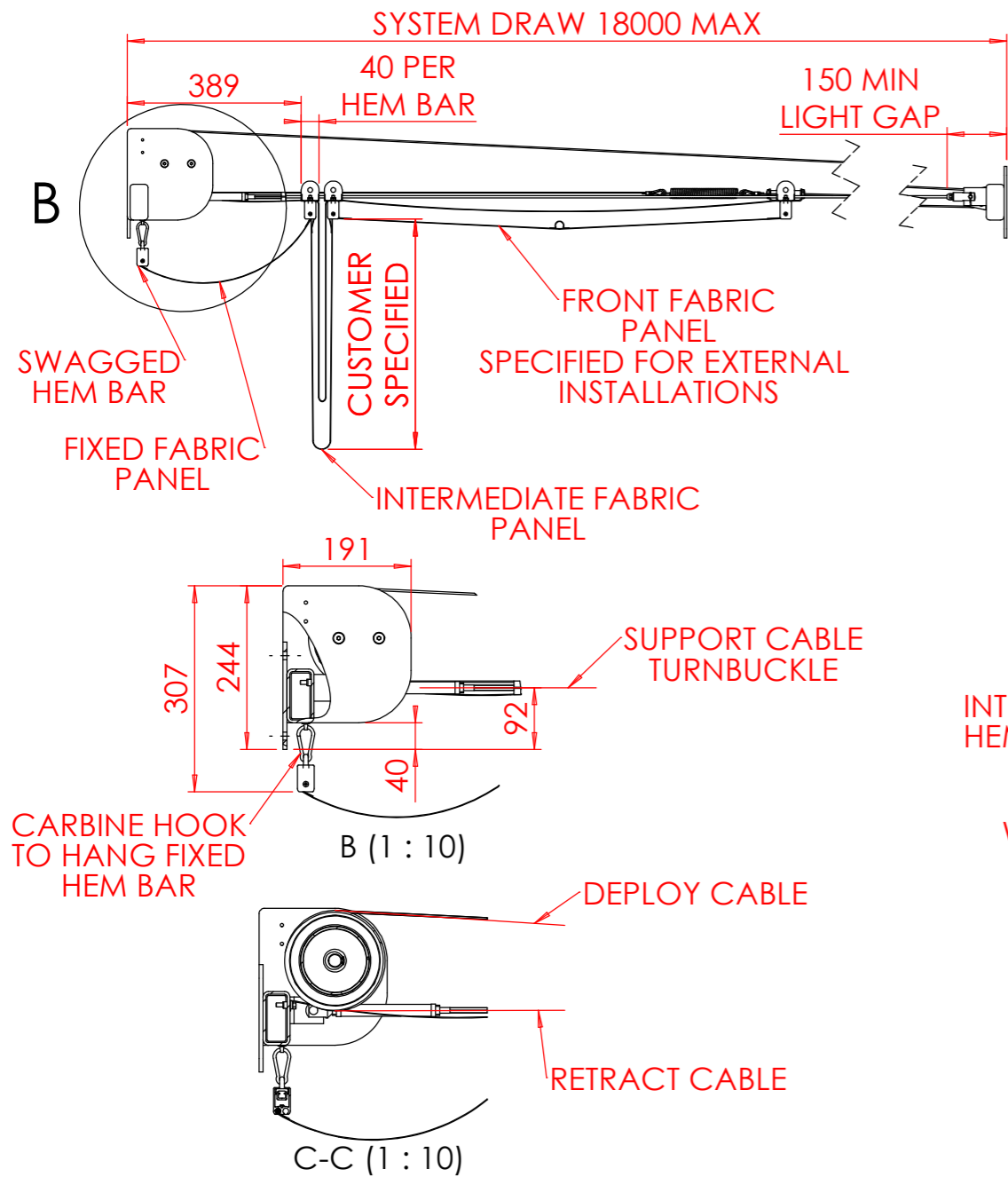
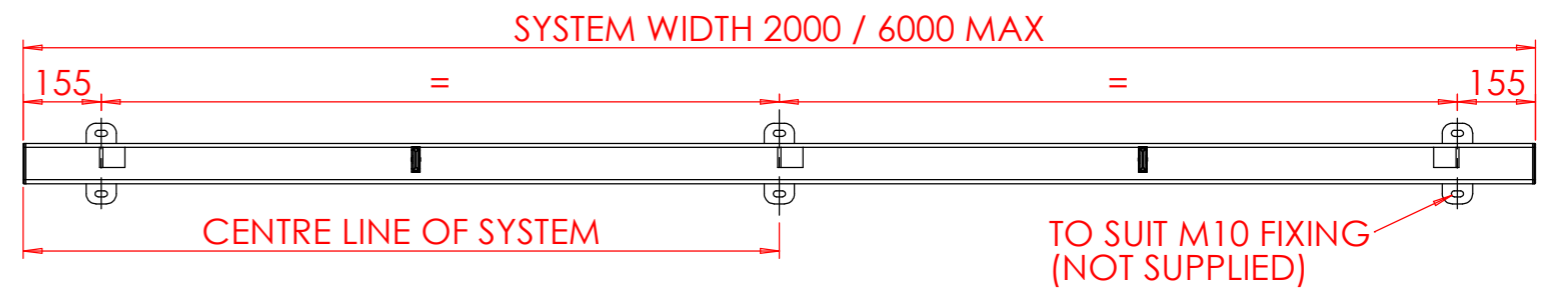


PRODUCTION	APPROVED FOR PRODUCTION
PURCHASING	APPROVED FOR PURCHASING
SALES	NO
MARKETING	NO



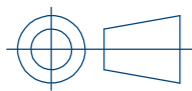
RETURN PULLEY FRAME (EXAMPLE SHOWN <3M WITH 3 FIXING PLATES)



REFER TO THE INSTALLATION MANUAL BEFORE INSTALLING THE SYSTEM.

GUTHRIE DOUGLAS DO NOT SUPPLY THE FIXINGS TO SECURE THE BARREL OR RETURN FRAME TO THE BUILDING STRUCTURE.

APPROXIMATELY 400 KG OF TENSION PER SUPPORT CABLE. THEREFORE THE WALL FIXINGS NEED TO BE ABLE TO WITHSTAND 400KG PER SUPPORT CABLE X 3 = 1200 KG TOTAL PER SYSTEM

THIRD ANGLE PROJECTION  REMOVE ALL SHARP EDGES IF IN DOUBT ASK DO NOT SCALE GENERAL TOLERANCES TO ISO2768-m ALL DIMNS.IN mm DRAWN TO BS308	This drawing is copyright and the exclusive property of GUTHRIE DOUGLAS GROUP LTD and must not be copied, used or exhibited without prior written consent. Guthrie Douglas 12 Heathcote Way, Heathcote Industrial Estate, Warwick CV34 6TE, UK Tel : (01926) 310850 Fax : (01926) 832914			Customer STANDARD	Scale 1:15		Size A3	Product Group SOLAR	Item No. N/A
	Material Surface Finish	Scale 1:15	Size A3	Drawn Thomas.Allies	Date 21-09-2020	Checked Thomas.Allies	Date 10-05-2021	TESS 512	DRG.NO: GDP26136 / 01

INSTALLATION DRAWING