

CASE STUDY

THE ROTUNDA

APPLICATION

Bespoke

ARCHITECT

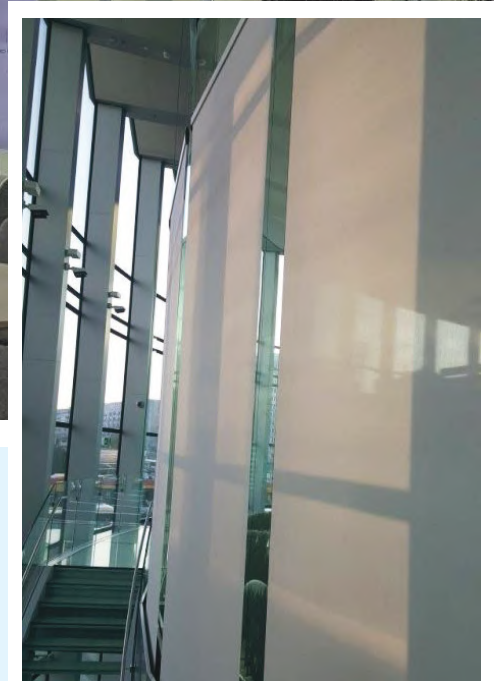
Gowinsiuta Studio

PRODUCT

TESS™100

LOCATION

Warsaw, Poland



Regarded as one of the most iconic buildings of the PRL period, the Rotunda in central Warsaw is again open following a two-year revitalization project. The structure has been redeveloped in a bid to update it for modern times. It is now a multifunctional space open to all.

A showcase glass entrance zone brings the users to level +4.55m. City Lounge's entrance zone is safely separated from the bank function located on Rotunda's ground and underground levels.

42 large TESS™100 tensioned systems and 42 roller blinds equipped with Panama Pro 5% white-grey fabric were fitted on this project. The building is said to be 17.7% more energy efficient than a reference building. It features a botanical garden with 17,000 plants. There are numerous touchscreens with information for the public in order to avoid paper brochures. All adding up to an ecological project with a range of environmental initiatives.



Visit us: www.guthriedouglas.com
Talk to us: +44(0)1926 310 850
Email us: projects@guthriedouglas.com

Guthrie Douglas