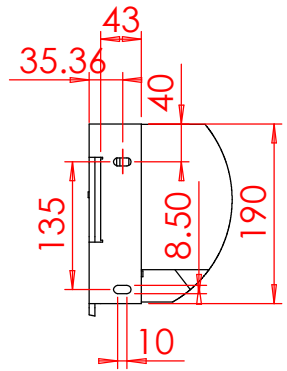
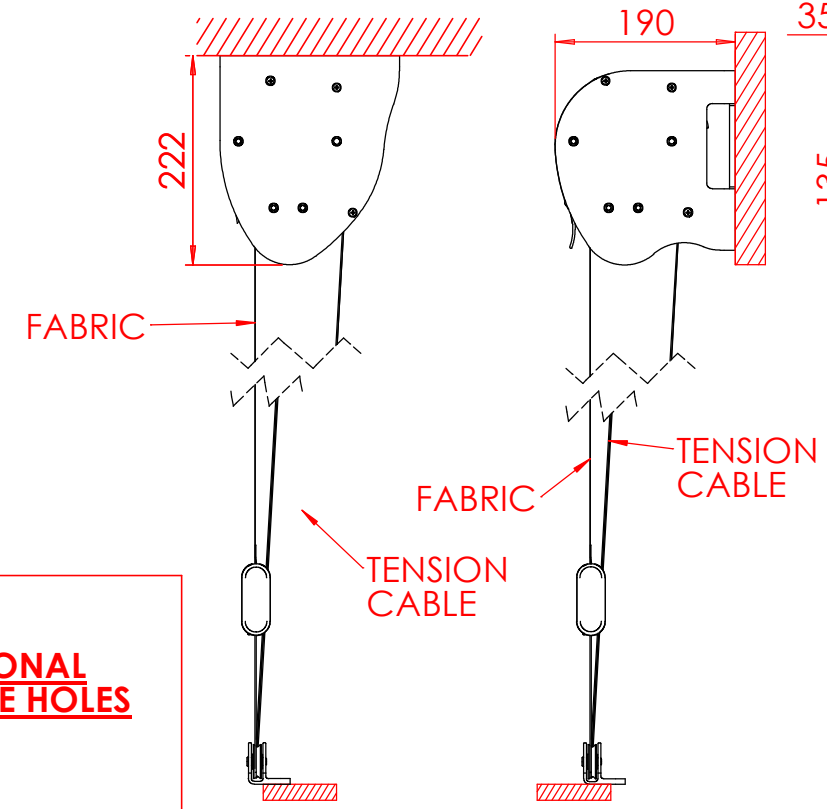
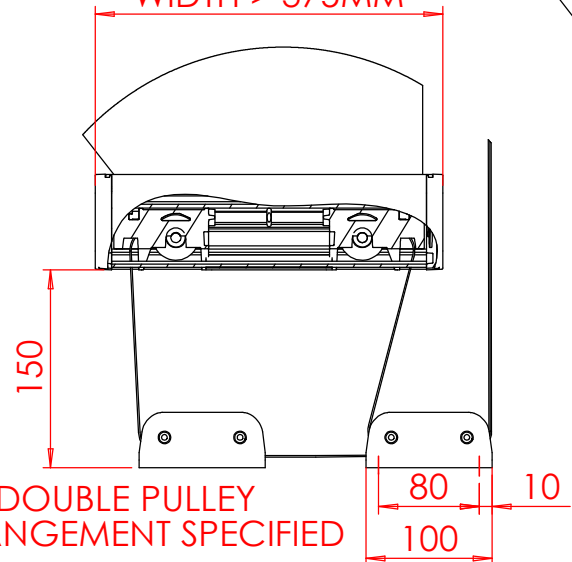


FACE FIX HEAD BOX

BOTTOM FIX HEAD BOX

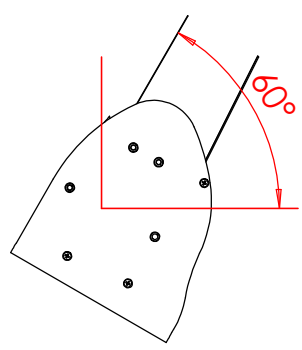


HEM BAR WIDTH > 375MM



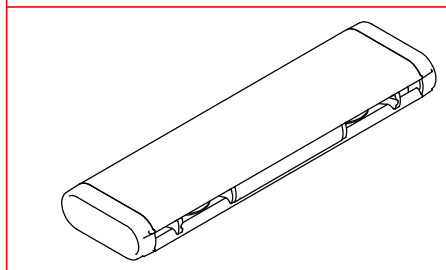
DOUBLE PULLEY ARRANGEMENT SPECIFIED

ADDITIONAL DRAINAGE HOLES



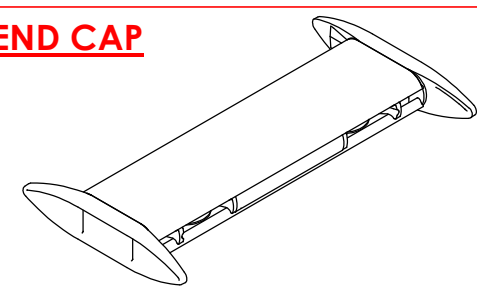
IF SYSTEM IS INSTALLED AS PER DIAGRAM >60° FROM HORIZONTAL DRAINAGE HOLES ARE REQUIRED.

SEE ORDER SHEET



HEM BAR END CAP

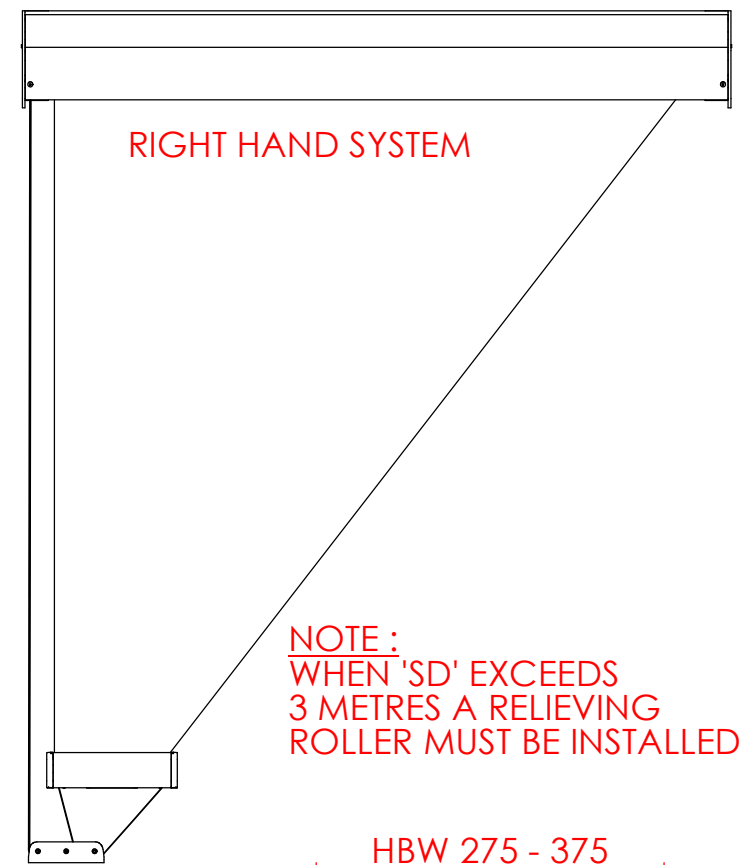
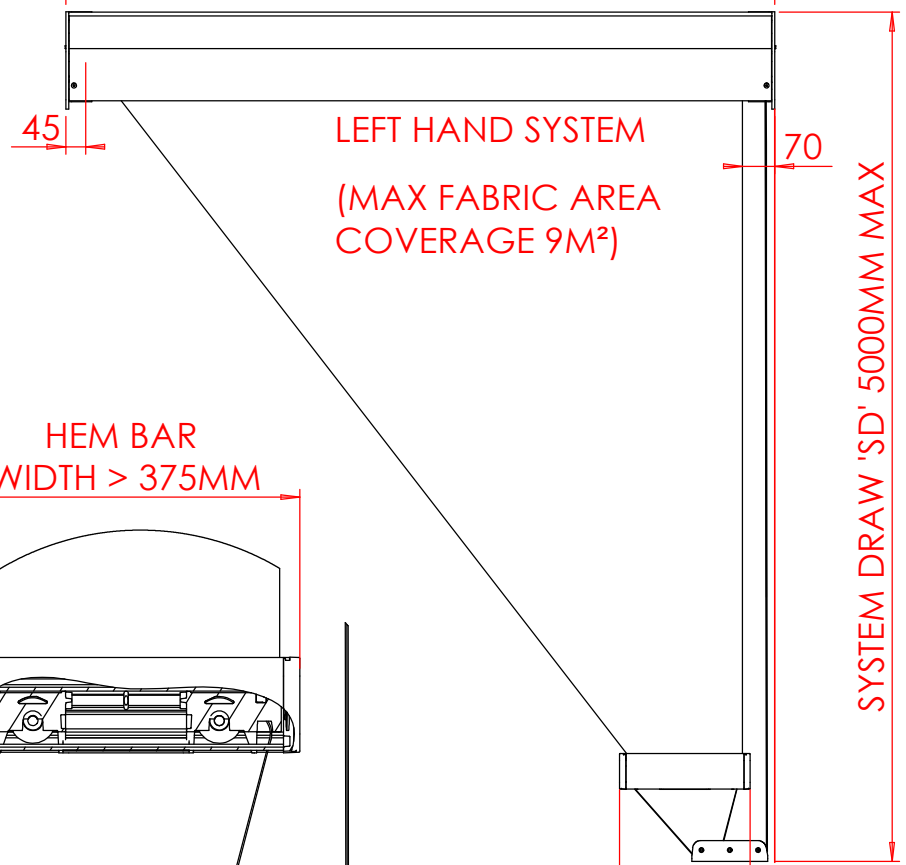
STANDARD HEM BAR WITH STANDARD HORIZONTAL AND VERTICAL SYSTEMS WITH A DRAW <3M



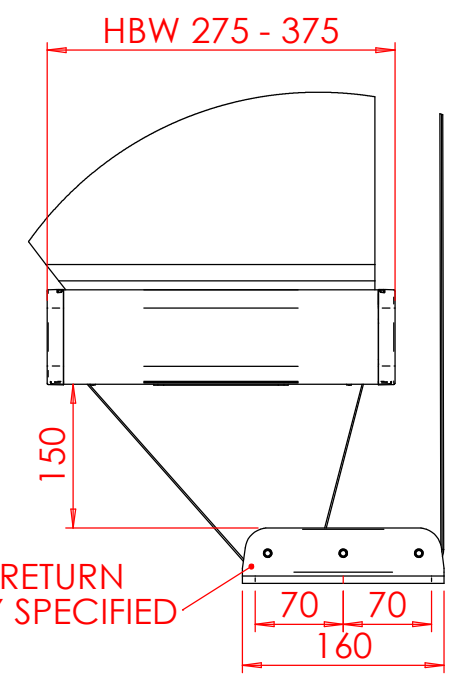
BOAT STYLE HEM BAR FOR SYSTEMS WITH RELIEVING ROLLERS AND A DRAW >3M

SYSTEM WIDTH ±2  
(1070MM STANDARD SPRING CASSETTE)  
(870MM SHORT SPRING CASSETTE)  
MAX WIDTH 4000MM

HEAD BOX LID NOT SHOWN




NOTE : WHEN 'SD' EXCEEDS 3 METRES A RELIEVING ROLLER MUST BE INSTALLED



TRIPLE RETURN PULLEY SPECIFIED

BARREL END PLATES AND RETURN PULLEYS REQUIRE M8 FIXINGS TO SECURE IN PLACE. FIXINGS NOT SUPPLIED BY GD.

THIRD ANGLE PROJECTION 		This drawing is copyright and the exclusive property of GUTHRIE DOUGLAS GROUP LTD., and must not be copied, used or exhibited without prior written consent.		Customer		TESS SYSTEMS		Product Group		Item No.		
REMOVE ALL SHARP EDGES		<div>Guthrie Douglas</div> <div>12 Heathcote Way, Heathcote Industrial Estate, Warwick CV34 6TE, UK Tel : (01926) 310850 Fax : (01926) 832914</div>		STANDARD				SOLAR		N/A		
IF IN DOUBT ASK	DO NOT SCALE			Material	Scale			Size	Drawn	Date	Checked	Date
GENERAL TOLERANCES TO ISO2768-m				Surface Finish	Special			TESS 401	ashley.smith	10-08-2017	Thomas.Allies	26-01-2023
ALL DIMNS.IN mm									DRAWN TO BS308		DRG.NO:	
						INSTALLATION DRAWING		GDP25287 / 02				
								SHEET 1 OF 1 SHEETS				