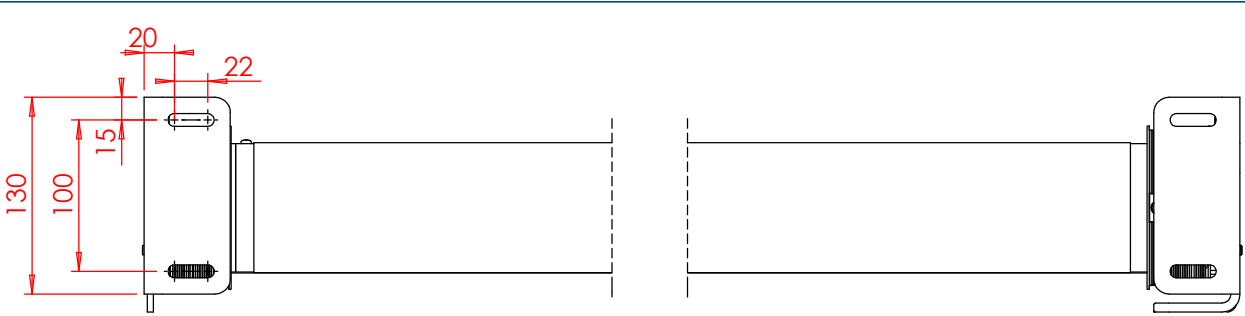


QUANTITY OF MOUNTING BRACKET KITS AND RELIEVING ROLLERS		
DRAW	BRACKET QTY	REL. ROLLER QTY
< 2000	2	N/A
<3000	4	OPTIONAL
3000 - 5000	6	1-2
> 5000	8	2 - 3
TO BE SPACED EVENLY		



PRODUCTION	APPROVED FOR PRODUCTION
PURCHASING	APPROVED FOR PURCHASING
SALES	NO
MARKETING	NO

THE SYSTEM MUST BE SET OUT SQUARE AND PARALLEL

FINE TRACKING ADJUSTMENT CAN BE CARRIED OUT AFTER INSTALLATION IS COMPLETED

ALL FIXING SLOTS 8.5 WIDTH (M8 FIXINGS)

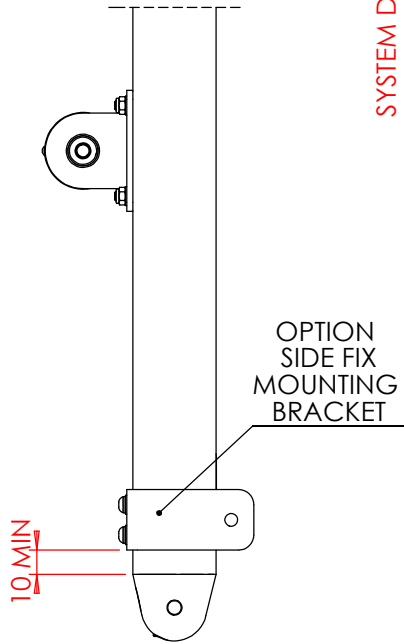
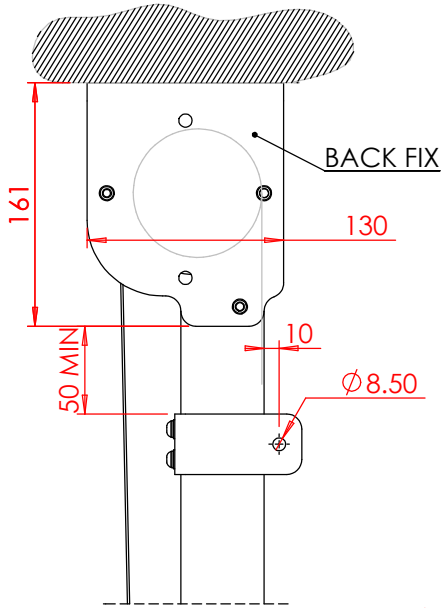
ALL FIXING SCREWS ARE SUPPLIED BY THE INSTALLER AND MUST BE CAPABLE OF WITHSTANDING PULLOUT LOADS

THE SYSTEM IS SUPPLIED AS A BARREL ASSEMBLY, MOUNTING PLATE KIT, CABLE KIT AND RETURN PULLEY KIT

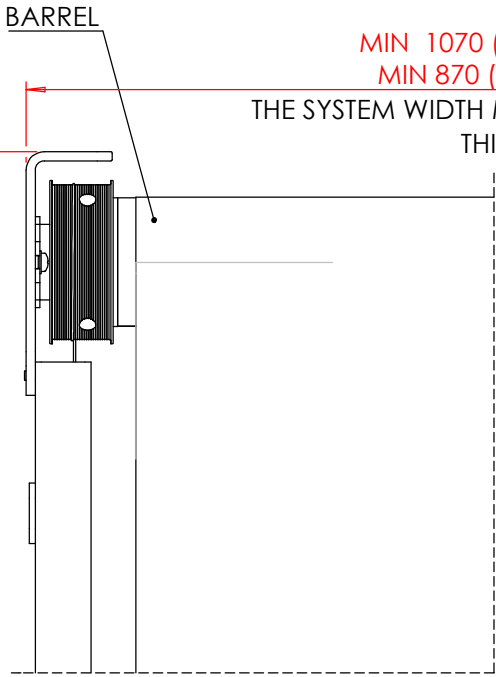
THE SYSTEM WILL BE SUPPLIED WITH A FIXING KIT, THE KIT WILL INCLUDE THE BARREL FIXING SCREWS, TENSIONING TOOL AND INSTALLATION MANUAL

THE SYSTEM MUST BE INSTALLED BY A REGISTERED INSTALLER FOLLOWING THE INSTALLATION MANUAL

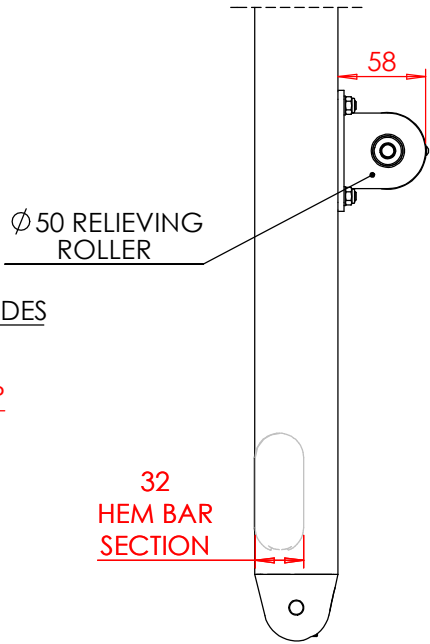
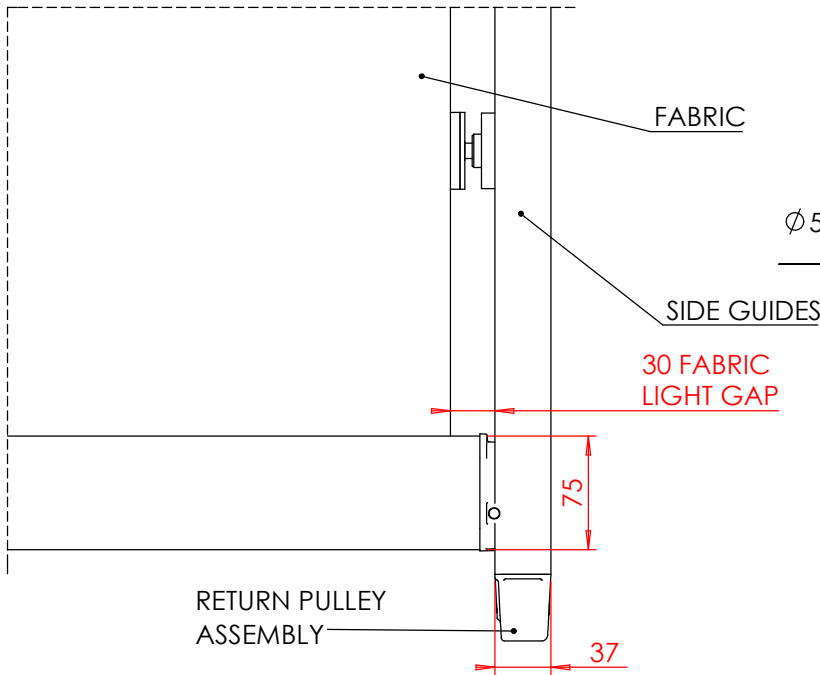
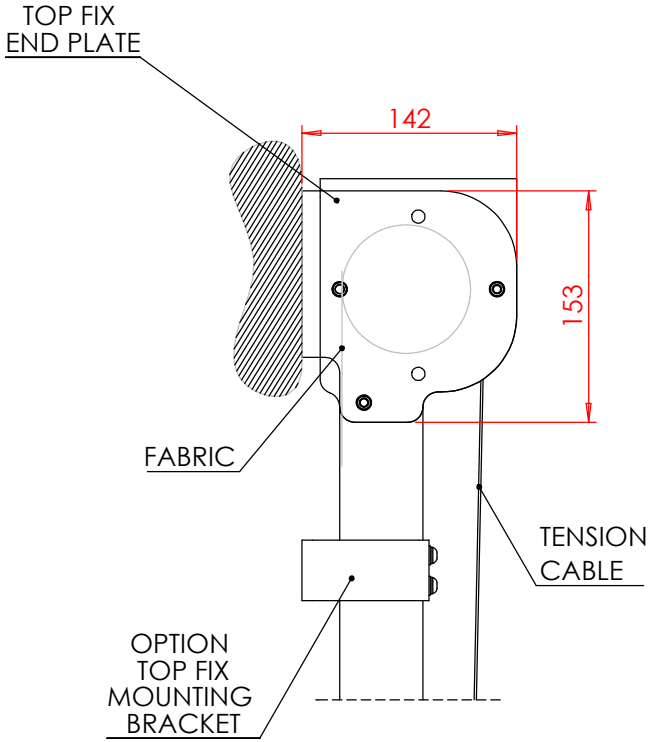
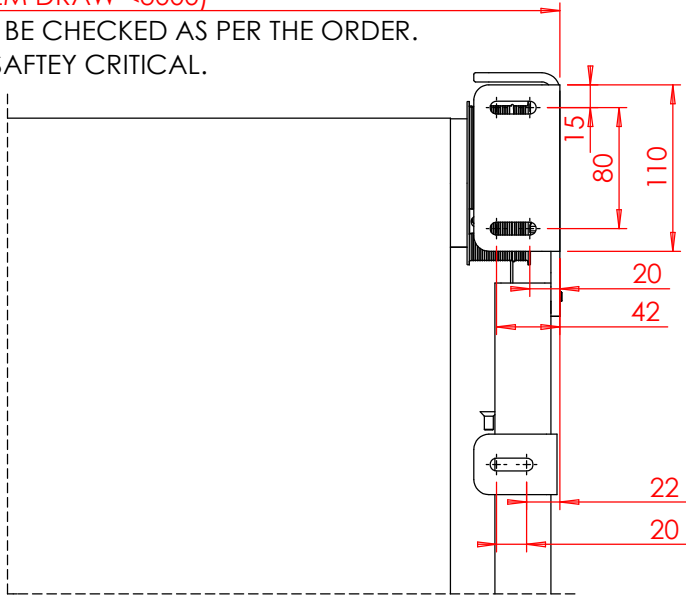
RELIEVING ROLLERS ARE USED TO SUPPORT FABRIC.

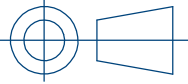


SYSTEM DRAW
MAX DRAW 6500



SYSTEM WIDTH ± 2
MAX 4000
MIN 1070 (SYSTEM DRAW > 3000)
MIN 870 (SYSTEM DRAW < 3000)
THE SYSTEM WIDTH MUST BE CHECKED AS PER THE ORDER.
THIS IS SAFETY CRITICAL.



THIRD ANGLE PROJECTION 	
REMOVE ALL SHARP EDGES	
IF IN DOUBT ASK	DO NOT SCALE
GENERAL TOLERANCES TO ISO2768-m	
ALL DIMNS.IN mm	DRAWN TO BS308

This drawing is copyright and the exclusive property of GUTHRIE DOUGLAS GROUP LTD and must not be copied, used or exhibited without prior written consent.

Guthrie Douglas

12 Heathcote Way, Heathcote Industrial Estate,
Warwick CV34 6TE, UK
Tel : (01926) 310850 Fax : (01926) 832914

Customer		
Material	Scale 1:5	Size A3
Surface Finish	Special	

TESS 120

INSTALLATION DRAWING

Product Group SOLAR			Item No. N/A
Drawn Samuel.Welsh	Date 08-09-2020	Checked Thomas.Allies	Date 25-01-2023
DRG.NO: GDP26125 / 02			
SHEET 1 OF 1 SHEETS			