

CASE STUDY

UNIVERSITY OF MICHIGAN

APPLICATION

Internal Façades

ARCHITECT

Kohn Pederson Fox Associates

PRODUCT

TESS™660

LOCATION

Michigan, USA

BUILDING TYPE

Education



A BMS integrated daylighting system, managing solar heat gain and glare.

Architects at Kohn Pederson Fox Associates, sought to improve the student experience and maximize site usage by constructing a new building, Jeff T. Blau Hall, and renovating

the connected Kresge Hall, both part of the Stephen M. Ross School of Business within the University of Michigan.

Completed in 2017, the project received LEED Gold® recognition from the U.S. Green Building Council, in part due to its custom daylighting systems.

Visit us: www.guthriedouglas.com

Talk to us: +44(0)1926 310 850

Email us: projects@guthriedouglas.com

Guthrie Douglas

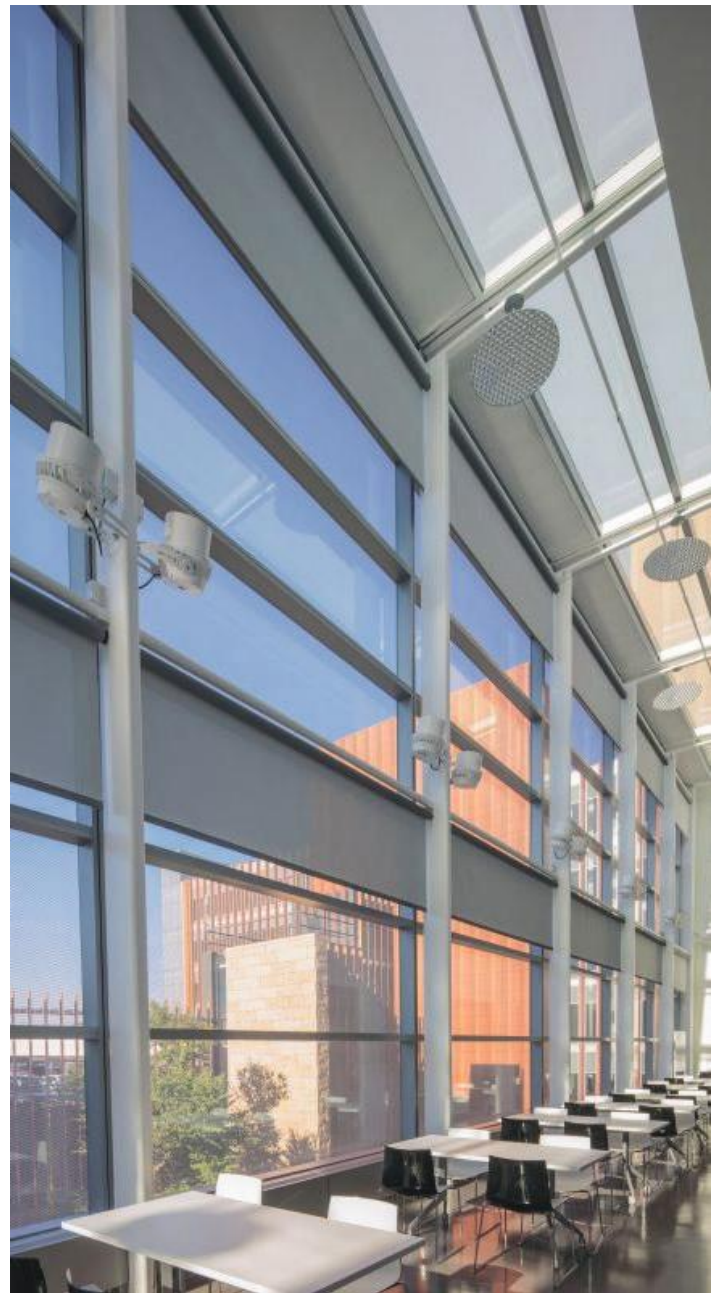
CASE STUDY

UNIVERSITY OF MICHIGAN



Guthrie Douglas worked with Hunter Douglas Architectural, the designers and construction leads at Walbridge Aldinger to balance design intent, daylighting performance and construction requirements. They settled on a shading system that features several groups of EOS 500 automated shades and a bank of TESS™660 skylight shades, manufactured by Guthrie Douglas in the UK.

“This system of window coverings is ideal for a space like this that has such large windows and skylights,” said Carl Sly, President at Creative Windows (the installer). “The ability to control daylighting from both the top down with roller shades and the bottom up on the skylights has a huge effect on both the feeling and functionality of the space.”



Visit us: www.guthriedouglas.com
Talk to us: +44(0)1926 310 850
Email us: projects@guthriedouglas.com

Guthrie Douglas